



Snohomish County

NWMLS Areas

610-770

Residential Only

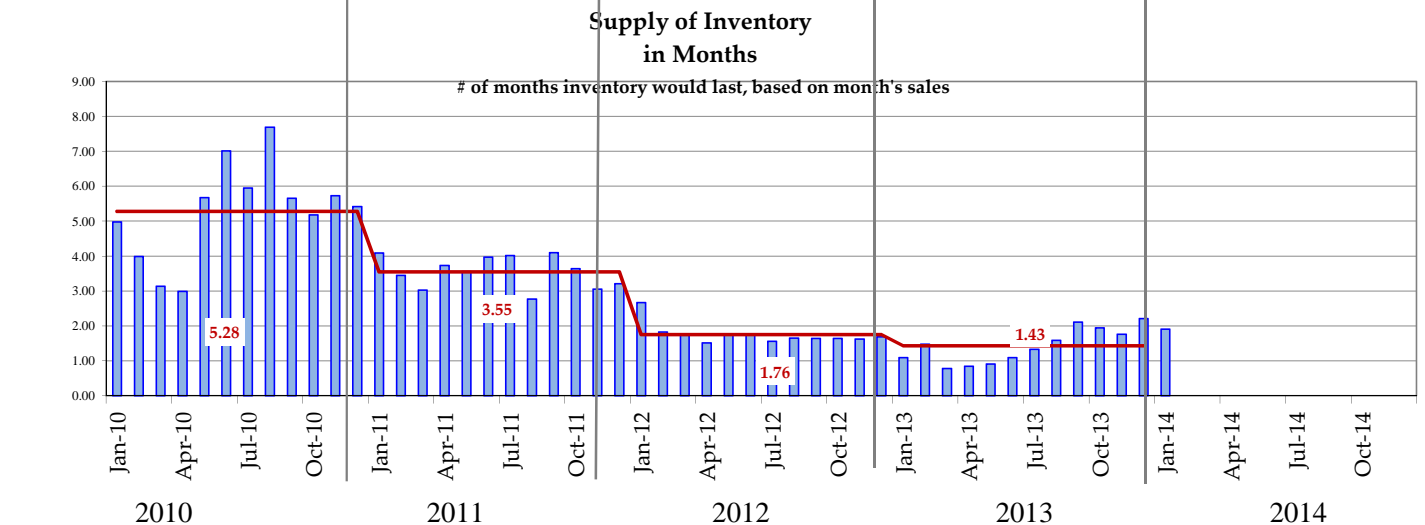
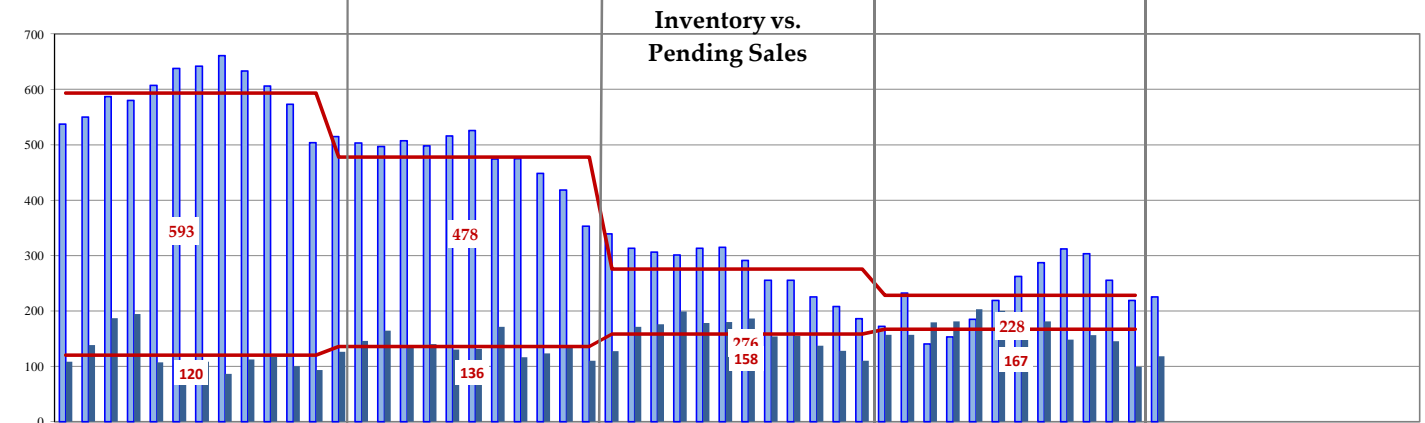
— Annual Average



Month	Pending median list price This Year	Pending median list price Last Year	% change	Inventory This Year	Inventory Last Year	% change	Pending Units MTD This Year	Pending Units MTD Last Year	% change
January	311,972	277,047	12.61%	1,800	1,351	33.23%	928	950	-2.32%
						YTD	928	950	-2.32%

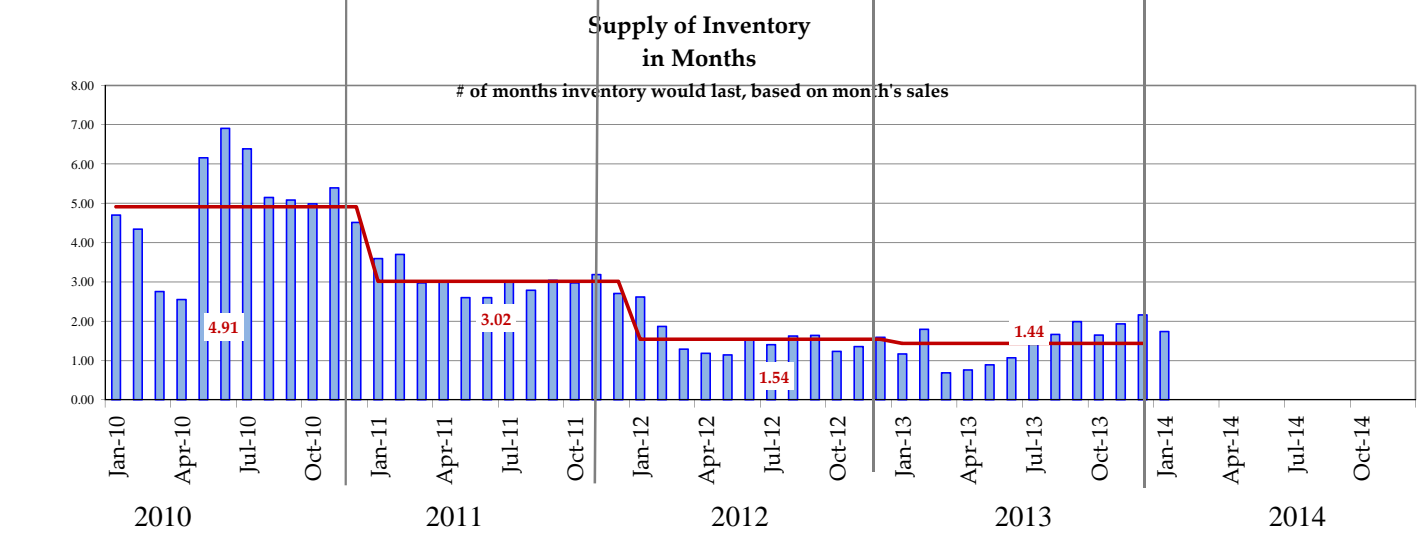
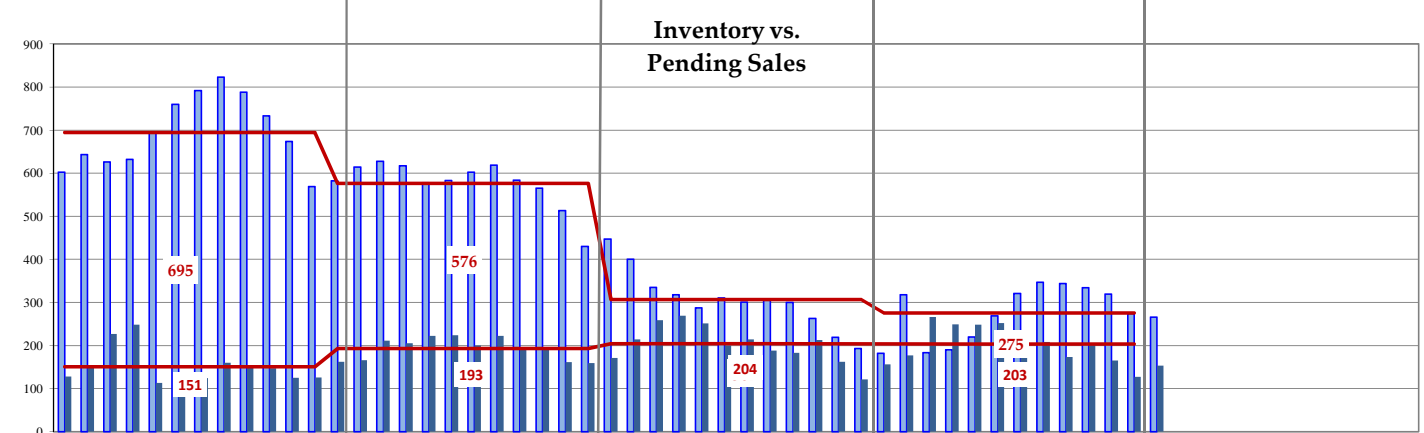
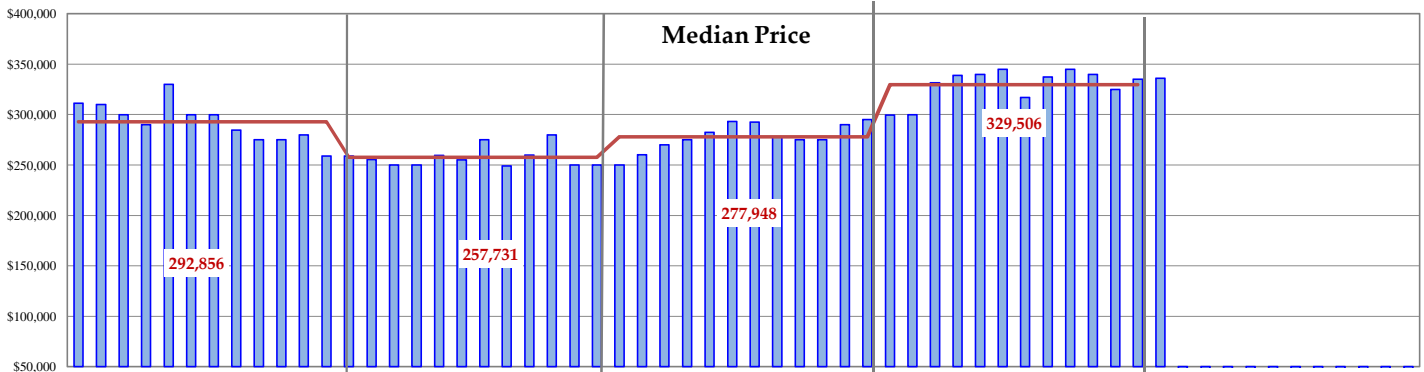
Graphs were created by Windermere Real Estate/M2, llc using Data from the NWMLS. Data was not verified.

— Annual Average



Month	Pending median list price This Year	Pending median list price Last Year	% change	Inventory This Year	Inventory Last Year	% change	Pending Units MTD This Year	Pending Units MTD Last Year	% change
January	468,970	359,000	30.63%	225	172	30.81%	118	157	-24.84%
						YTD	118	157	-24.84%

— Annual Average



Month	Pending median list price This Year	Pending median list price Last Year	% change	Inventory This Year	Inventory Last Year	% change	Pending Units MTD This Year	Pending Units MTD Last Year	% change
January	335,950	299,575	12.14%	266	182	46.15%	153	156	-1.92%
						YTD	153	156	-1.92%

— Annual Average



Month	Pending median list price This Year	Pending median list price Last Year	% change	Inventory This Year	Inventory Last Year	% change	Pending Units MTD This Year	Pending Units MTD Last Year	% change
January	314,475	282,475	11.33%	375	302	24.17%	254	230	10.43%
						YTD	254	230	10.43%

— Annual Average



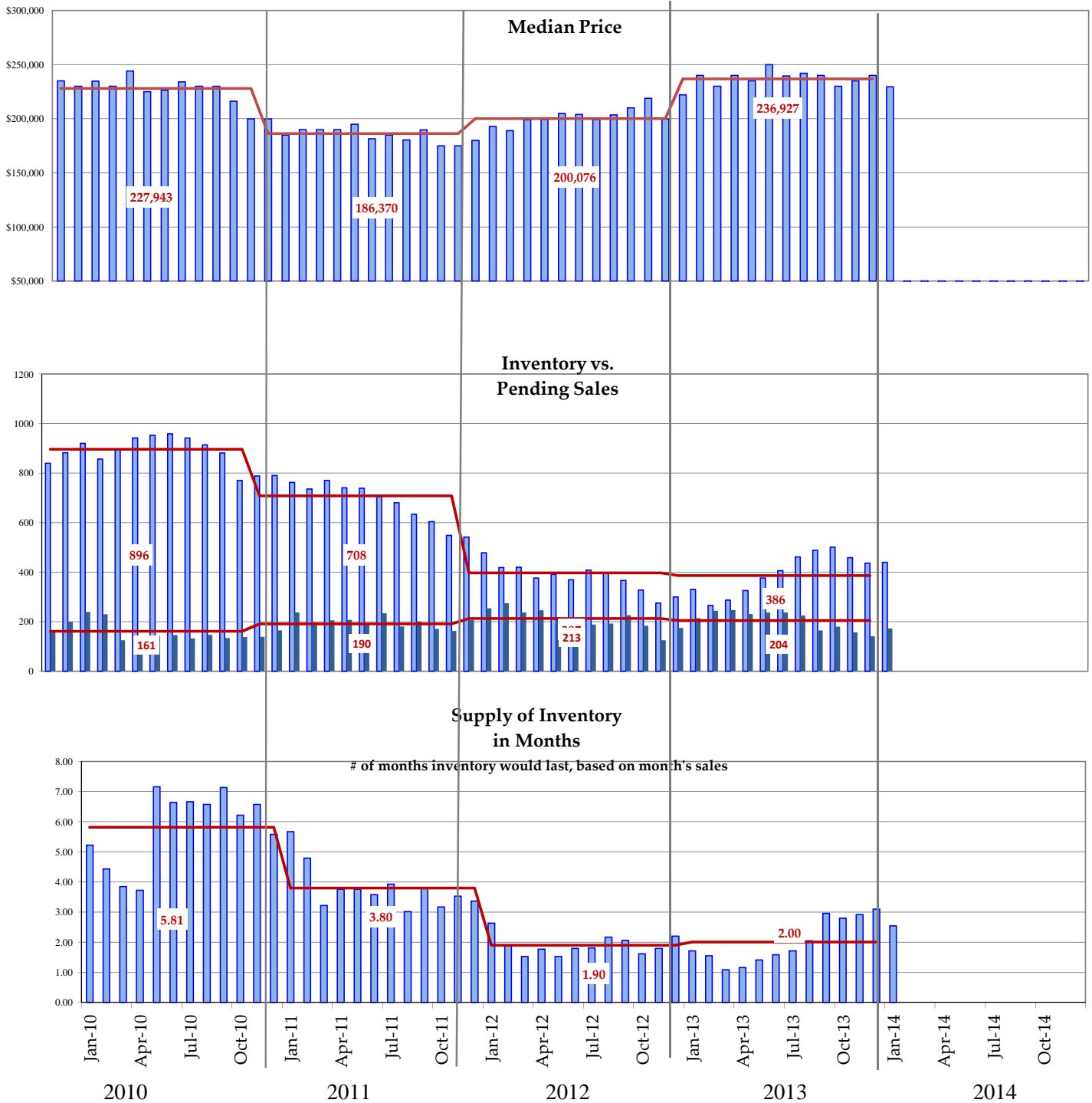
Month	Pending median list price This Year	Pending median list price Last Year	% change	Inventory This Year	Inventory Last Year	% change	Pending Units MTD This Year	Pending Units MTD Last Year	% change
January	287,250	239,950	19.71%	240	142	69.01%	114	111	2.70%
						YTD	114	111	2.70%

— Annual Average



Month	Pending median list price This Year	Pending median list price Last Year	% change	Inventory This Year	Inventory Last Year	% change	Pending Units MTD This Year	Pending Units MTD Last Year	% change
January	262,450	244,995	7.12%	254	253	0.40%	116	121	-4.13%
						YTD	116	121	-4.13%

— Annual Average



Month	Pending median list price This Year	Pending median list price Last Year	% change	Inventory This Year	Inventory Last Year	% change	Pending Units MTD This Year	Pending Units MTD Last Year	% change
January	229,500	222,000	3.38%	440	300	46.67%	173	175	-1.14%
						YTD	173	175	-1.14%

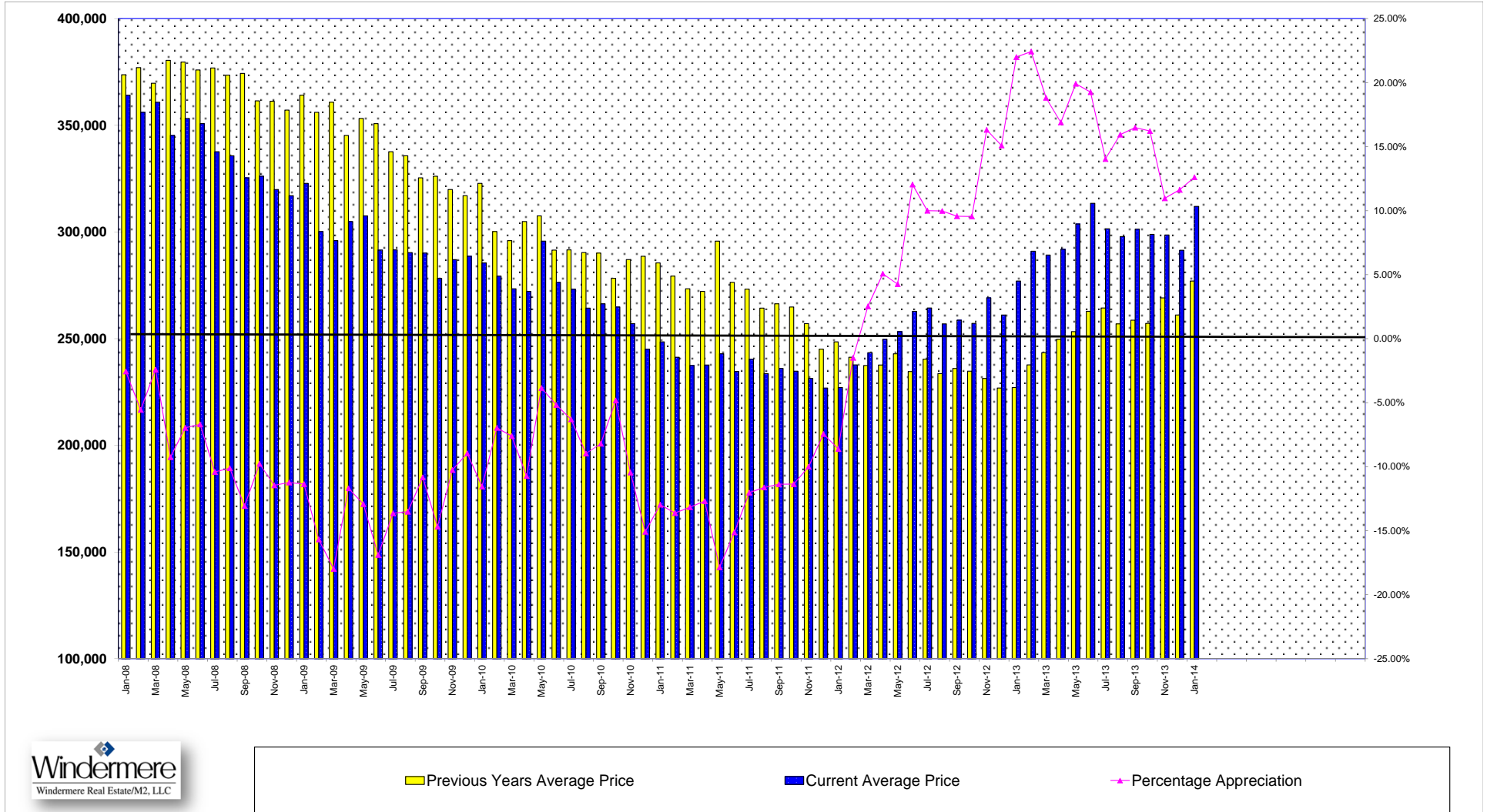
NWMLS 610-770 Summary Report

Residential Active and Pending Sales

	Jan	Feb	Mar	Apr	May	Jun	Jul	Aug	Sep	Oct	Nov	Dec	YTD	Total For Entire Year		
2014	#of Active Listings	1800											1800	33.23%	A	
	# of Pending Listings	928											928	-2.32%	T	
	Average Median Pending \$	311,972											311,972	12.61%	TA	
	Months Supply of Inventory	1.9											1.9	1.9	TA	
2013	#of Active Listings	1351	1703	1257	1325	1534	1791	2080	2260	2324	2276	2108	1830	1351	-48.79%	A
	# of Pending Listings	950	1034	1351	1271	1255	1252	1229	1156	961	1008	849	700	950	0.74%	T
	Average Median Pending \$	277,047	291,002	289,222	291,884	303,731	313,434	301,512	297,869	301,303	298,897	298,607	291,464	277,047	22.00%	TA
	Months Supply of Inventory	1.4	1.6	0.9	1.0	1.2	1.4	1.7	2.0	2.4	2.3	2.5	2.6	1.4	1.7	TA
2012	#of Active Listings	2638	2407	2175	2107	2041	2040	1973	1990	1895	1719	1541	1341	2638	1989	A
	# of Pending Listings	943	1171	1395	1297	1314	1208	1182	1094	1009	1097	921	718	943	13349	T
	Average Median Pending \$	227,089	237,695	243,420	249,700	253,294	262,826	264,409	256,911	258,652	257,181	269,102	261,100	227,089	257,046	TA
	Months Supply of Inventory	2.8	2.1	1.6	1.6	1.6	1.7	1.7	1.8	1.9	1.6	1.7	1.9	2.8	1.8	TA
2011	#of Active Listings	3789	3767	3719	3724	3751	3727	3706	3613	3511	3301	3128	2676	3789	3534	A
	# of Pending Listings	784	889	1135	1025	1087	1050	1004	1111	972	1006	858	828	784	11749	T
	Average Median Pending \$	248,487	241,285	237,422	237,639	242,935	234,578	240,376	233,604	236,066	234,768	231,367	226,852	248,487	236,744	TA
	Months Supply of Inventory	4.8	4.2	3.3	3.6	3.5	3.5	3.7	3.3	3.6	3.3	3.6	3.2	4.8	3.6	TA
2010	#of Active Listings	3935	4149	4318	4279	4518	4694	4770	4834	4679	4405	4140	3640	3935	4363	A
	# of Pending Listings	805	954	1288	1280	671	699	755	772	767	831	710	626	805	10158	T
	Average Median Pending \$	285,502	279,324	273,414	272,167	295,737	276,414	273,228	264,336	266,341	264,855	257,076	245,097	285,502	272,697	TA
	Months Supply of Inventory	4.9	4.3	3.4	3.3	6.7	6.7	6.3	6.3	6.1	5.3	5.8	5.8	4.9	5.2	TA
2009	#of Active Listings	4526	4587	4625	4500	4592	4527	4573	4491	4394	4168	4024	3533	4526	4378	A
	# of Pending Listings	533	558	747	934	960	997	970	980	1017	975	680	628	533	9979	T
	Average Median Pending \$	322,764	300,245	295,934	304,875	307,579	291,495	291,608	290,358	290,146	278,274	287,087	288,612	322,764	291,552	TA
	Months Supply of Inventory	8.5	8.2	6.2	4.8	4.8	4.5	4.7	4.6	4.3	4.3	5.9	5.6	8.5	5.3	TA
2008	#of Active Listings	5037	5283	5484	5763	6104	5819	6111	6058	5749	5371	5170	4362	5037	5526	A
	# of Pending Listings	575	716	711	728	688	726	730	744	655	503	462	455	575	7693	T
	Average Median Pending \$	364,118	356,080	360,828	345,215	353,214	350,770	337,652	335,725	325,402	326,161	319,889	317,007	364,118	341,433	TA
	Months Supply of Inventory	8.8	7.4	7.7	7.9	8.9	8.0	8.4	8.1	8.8	10.7	11.2	9.6	8.8	8.6	TA
2007	#of Active Listings	3547	3655	4036	4502	4988	5382	5532	5922	5968	5822	5422	4617	3547	4949	A
	# of Pending Listings	910	1124	1260	1274	1244	1117	1086	923	703	699	610	525	910	11475	T
	Average Median Pending \$	373,672	377,033	369,737	380,449	379,660	375,929	376,856	373,495	374,335	361,484	361,278	357,131	373,672	374,003	TA
	Months Supply of Inventory	3.9	3.3	3.2	3.5	4.0	4.8	5.1	6.4	8.5	8.3	8.9	8.8	3.9	5.2	TA
2006	#of Active Listings	2792	2791	2902	2976	3255	3483	3688	3804	4055	3993	3775	3128	2792	3387	A
	# of Pending Listings	998	1187	1573	1526	1514	1460	1316	1321	1131	1133	877	763	998	14799	T
	Average Median Pending \$	331,411	334,755	337,025	345,173	351,361	355,026	356,759	358,899	356,875	355,110	357,547	364,300	331,411	355,068	TA
	Months Supply of Inventory	2.8	2.4	1.8	2.0	2.1	2.4	2.8	2.9	3.6	3.5	4.3	4.1	2.8	2.7	TA
2005	#of Active Listings	2762	2755	2662	2570	2734	2747	3012	3039	3163	3163	2832	2447	2762	2824	A
	# of Pending Listings	981	1271	1604	1538	1534	1705	1554	1688	1362	1246	1142	836	981	16461	T
	Average Median Pending \$	269,282	281,206	288,224	294,877	298,563	304,140	316,250	322,088	319,766	320,558	326,996	326,952	269,282	310,195	TA
	Months Supply of Inventory	2.8	2.2	1.7	1.7	1.8	1.6	1.9	1.8	2.3	2.5	2.5	2.9	2.8	2.1	TA



Snohomish County Historical Appreciation Graph



Graph developed using data provided by the Northwest Multiple Listing Service by Windermere Real Estate/M2, LLC. Information was not verified.

Snohomish County By Price
NWMLS Areas 610, 730-770
Residential Active Inventory and Closed Sales

2014																
Sales Price	Closed Sales January	Closed Sales February	Closed Sales March	Closed Sales April	Closed Sales May	Closed Sales June	Closed Sales July	Closed Sales August	Closed Sales September	Closed Sales October	Closed Sales November	Closed Sales December	YTD Closed Sales Total	Active on 1/31/2014 by List Price	Months Supply of Inventory *	YTD % of the Market
\$0 to \$199,999	71												71	261	3.68	18.11%
\$200,000 to \$299,999	127												127	398	3.13	32.40%
\$300,000 to \$399,999	114												114	444	3.89	29.08%
\$400,000 to \$499,999	48												48	276	5.75	12.24%
\$500,000 to \$599,999	20												20	188	9.40	5.10%
\$600,000 to \$699,999	7												7	86	12.29	1.79%
\$700,000 to \$799,999	3												3	37	12.33	0.77%
\$800,000 to \$899,999	0												-	22		0.00%
\$900,000 to \$999,999	0												-	16		0.00%
\$1,000,000 to \$1,249,999	1												1	11	11.00	0.26%
1,250,000 and up	1												1	44	44.00	0.26%
Totals	392	-	-	-	-	-	-	-	-	-	-	-	392	1,783	4.55	100.00%

2013																
Sales Price	Closed Sales January	Closed Sales February	Closed Sales March	Closed Sales April	Closed Sales May	Closed Sales June	Closed Sales July	Closed Sales August	Closed Sales September	Closed Sales October	Closed Sales November	Closed Sales December	YTD Closed Sales Total	Active on 1/31/2013 by List Price	Months Supply of Inventory *	YTD % of the Market
\$0 to \$199,999	145	124	136	145	159	154	132	125	115	131	85	103	145	565	3.90	26.32%
\$200,000 to \$299,999	199	186	240	262	299	297	303	300	255	286	210	202	199	408	2.05	36.12%
\$300,000 to \$399,999	120	139	183	228	245	215	248	251	203	212	172	170	120	329	2.74	21.78%
\$400,000 to \$499,999	64	43	106	103	140	138	148	126	113	94	100	95	64	199	3.11	11.62%
\$500,000 to \$599,999	12	27	29	36	44	44	48	53	47	44	42	49	12	80	6.67	2.18%
\$600,000 to \$699,999	5	9	11	14	17	18	20	21	21	19	12	19	5	40	8.00	0.91%
\$700,000 to \$799,999	2	5	5	10	9	8	9	15	7	4	5	4	2	39	19.50	0.36%
\$800,000 to \$899,999	1	1	4	2	5	3	4	5	5	1	4	3	1	12	12.00	0.18%
\$900,000 to \$999,999	-	-	-	1	2	2	1	4	3	1	2	-	-	13		0.00%
\$1,000,000 to \$1,249,999	-	3	-	1	3	4	3	3	1	2	1	3	-	13		0.00%
1,250,000 and up	3	3	1	1	5	1	1	3	2	1	1	1	3	28	9.33	0.54%
Totals	551	540	715	803	928	884	917	906	772	795	634	649	551	1,726	3.13	100.00%



Statistics That You Must Know Areas 610-770

RESIDENTIAL				
	<u>January 2014</u>	<u>January 2013</u>	<u>Difference</u>	<u>% Change</u>
Months Supply of Inventory	1.94	1.42	0.52	36.4%
Total Active Listings	1800	1351	449	33.2%
Average Active List Price	\$416,634	\$383,471	\$33,163	8.6%
Average Active Market Time	101	106	-5	-4.7%
Pending (Month to date)	928	950	-22	-2.3%
Number of Closed Sales (YTD)	492	580	-88	-15.2%
Average Closed Sales Price (YTD)	\$320,277	\$284,859	\$35,418	12.4%

CONDOMINIUM				
	<u>January 2014</u>	<u>January 2013</u>	<u>Difference</u>	<u>% Change</u>
Months Supply of Inventory	1.33	0.97	0.36	37.7%
Total Active Listings	355	197	158	80.2%
Average Active List Price	\$229,270	\$212,100	\$17,170	8.1%
Average Active Market Time	84	75	9	12.0%
Pending (Month to date)	267	204	63	30.9%
Number of Closed Sales (YTD)	123	133	-10	-7.5%
Average Closed Sale Price (YTD)	\$203,862	\$149,511	\$54,351	36.4%

Figures compiled using NWMLS data. Information has not been verified and is not published by the NWMLS.
NWMLS data for Areas 610-770